

“It Takes A Village”

Ernie Martin, MaineDOT, Highway Program, Sr. Project Manager

PLANNING TO PROJECT DEVELOPMENT

Planning and Visioning

Project Development

Planning

Project Development

1.

Planning working collectively with the Municipality, developing scope, concept plans and executing a Cooperative Agreement. ****

2.

Planning handoff meeting with Project Development

3.

Develop draft plans and estimate to prepare project for Grant Application

****Through the Village Partnership Initiative project process, Planning and Project Development are in constant communications making sure the design is properly vetted.

Initiative 1

PLANNING WORKING COLLECTIVELY WITH THE MUNICIPALITY, DEVELOPING SCOPE, CONCEPT PLANS AND EXECUTING A COOPERATIVE AGREEMENT

- To be successful, projects must be planned and scoped to state of “ Grant readiness”:
- Clear project scope and definition. What exactly is the project?
 - Public outreach, demonstrated support and consensus. Does the public support the project?
 - Preliminary engineering. Can it be built?
 - Will there be right of way impacts?
 - Cost estimating. What is the projected cost?
 - Municipal support and funding commitments. (Agreement)
- Some things to consider when planning an anticipated grant project:
- Initial topographic survey.
 - Environmental Screening.
 - Review the existing right of way.
 - Review the existing underground and aboveground utilities.

Initiative 2

Planning handoff meeting with Project Development Project Manager

Set meeting with Planning and Design Teams Project Manager.
Review the agreement, scope, plans, estimate, any outstanding items, etc.

Initiative 3

Develop draft plans and estimate to prepare project for Grant Application

Establish design team

Team kickoff meeting

Advance concept plans from planning study to develop a grant-based scope and cost estimate.

Apply for Grant

PROJECT DESIGN-ITEMS OF CONSIDERATION

There are many items of interest that need to be considered when designing Downtown/Village type projects. MaineDOT shall consider the needs of all users of the transportation system as the department plans, builds, rehabilitates, reconstructs, and maintains state-jurisdiction streets and highways.



PROJECT DESIGN-ITEMS OF CONSIDERATION

Businesses



Residential



Destination



Bike/Ped
Mobility



Traffic Calming



Intersection
Improvements
(LOS)



Access
Management



Parking



Pinch Points



Utilities



Right-of-Way
Constraints



Emergency
Services



Transit



Traffic Volumes
(AM vs PM)



Environmental
NEPA



Drainage



ROADWAY DESIGN GUIDANCE USED FOR VILLAGE/DOWNTOWN PROJECTS

MaineDOT Design Guidance, Engineering Practices and Procedures

- <https://www.maine.gov/mdot/engineering/highway/>

A Policy on Geometric Design of Highways and Streets by the American Association of State Highway and Transportation Officials (AASHTO)
(Edition 2018)

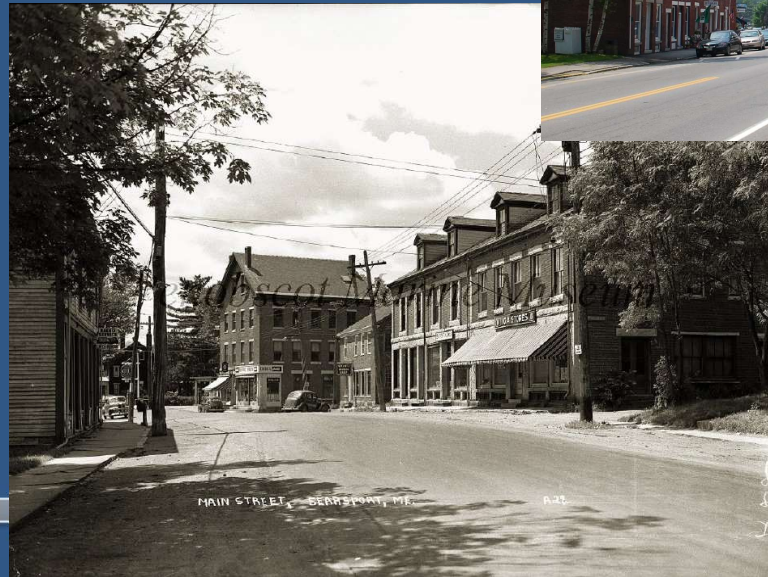
MaineDOT Complete Street Policy

FHWA Traffic Calming ePrimer

ENVIRONMENTAL CONSIDERATIONS

National Environmental Policy Act (NEPA) review is required for federally funded projects. This involves additional review and requirements like

- Historic resources review
- Comprehensive purpose and need
- Design element review requirements
 - Lighting, landscaping, bump-outs
- Analysis of alternatives
- Minimization or mitigation measures
- Consideration of natural, cultural, and social environmental resources.
- Public input and comments.



UNDERGROUND, AERIAL UTILITY & RAILROAD INFRASTRUCTURE

Underground Utilities

- Water
- Sewer
- Gas
- Communications
- Power



Aerial Utilities

- Communications
- Power
- Cable

Railroad

- Crossing upgrades
- Agreements needed



Questions to ask:

- Could be conflict with proposed drainage upgrades
- Upgrade facilities or betterments
- Any abandoned facilities- Aerial or underground
- New utility facilities
- Locations of existing facilities
 - Mark out for survey
 - As-built plans

RIGHT OF WAY INFORMATION

What is the existing right of way.

- Easement highway.
 - 50', 66', 80', 100', etc. widths, depending on highway classification
- Wrought portion/ Prescriptive rights

UNDERSTAND PROJECT AREA

Businesses



Residential



Destination



Emergency Services



Parking



Traffic Volumes
(AM vs PM)



Access Management



Pinch Point
In Corridor



Vehicular Design Elements

AM/PM peak traffic volumes

High accident locations?

Types of Vehicles-(Passenger, Box trucks,
Tractor trailers, Fire truck, etc.

Intersection design improvement needs

Access Management improvements

- Driveway openings
- Number of entrances
- On street parking

Business/Residential Area

- Year round
- Seasonal
- Tourist Location

BICYCLE & PEDESTRIAN MOBILITY

Pedestrian facilities

- ADA Compliant
- Existing/new sidewalks (HMA, Brick or Concrete)

Bicycle facilities

- 5' shoulders
- Sharrow
- Bike track
- Multi-use paths
- Connectivity



TRAFFIC CALMING

- Crosswalks/Raised sidewalks locations and types
- RFB's
- Curbed areas
- Bumpouts
- Speed limit reduction- transition speed
- On street parking
- Street trees
- Sidewalk lighting
- Temporary bike lanes with bollards
- Refuge islands on crosswalks
- Road painted speed limits



PREPARE PUBLIC FOR CONSTRUCTION

Bring community and stakeholders into the constructability plans.

- Get input/feedback through hearings, mailings or surveys.

Construction season. Every project has a different identity.

- Detours- lengths of detours
- Working days
- Holidays and local events
- Alternating traffic



Business access during construction

How to manage:

- Channelized Devices: Concrete, water filled, chain link fence.
- Sidewalk Detour Closure, plans during construction
- ADA access problems/needs


Hallowell Water St. Project

Reminder: all area business, on both sides of the street, are open to foot traffic.

ALL AREA BUSINESSES
OPEN & ACCESSIBLE

Come in We're OPEN

Please drive carefully and courteously through the work zone and the detour route.



For more information and to sign up for email alerts, go to mainedot.gov

mainedot.gov



CONSTRUCTION IS NEVER EASY



CONSTRUCTION COMMUNICATIONS

Projects Public information plan
Newspaper ads
Door tags
Email alerts
Etc.

MaineDOT Website (sign up for email alerts)
Municipal site when available
MaineDOT Facebook
Weekly contractor updates
Utilize Board of trades, chambers, local committees and their network of communications.

- Traffic management plan for detours



WISCASSET, ROUTE 1



HALLOWELL DOWNTOWN



BEFORE AND AFTER PROJECT VIDEOS

Belgrade, Route 27, Before and After Project Video-

- <https://youtu.be/TMS0r33oeBs>

Hallowell Downtown, Before and After Project Video-

- <https://youtu.be/CSGSVYsugAo>

Ogunquit, Route 1, Before and After Project Video-

- <https://youtu.be/xLgZvBJrulk>

CURRENT GRANT PROJECTS IN DESIGN

North Windham Moves: Regional Mobility-Local Access Project

Downtown Sanford RAISE Grant Project

“IT TAKES A VILLAGE TO WORK THROUGH A
VILLAGE/DOWNTOWN PROJECT”



(207) 624-3381



mainedot.gov



Ernest.martin@maine.gov

CONTACT US