

74TH MAINE TRANSPORTATION CONFERENCE

TRANSPORTATION IS CONNECTIONS

SOLVING THE PUZZLE TOGETHER | THURSDAY DEC. 4, 2025

Trivia Competition Rules

- There will be 6 rounds containing 5 questions in each round
- Write your team's answer on the given space on your table's answer sheet
- After each round, a volunteer assistant will be making their way around the room with answer keys marking how many questions each table got correct
- We will then give the correct answers for each round
- Total amount of correct scores wins the Grand Prize
- NO PHONES and NO CHEATING... We want to keep this light and fun so don't be that guy or gal...
- The Question Master (aka Me) is the final judge, jury, and executioner on any appeals or decisions that are to be made throughout the game. My decision is final. If you don't like my ruling, you can appeal to the "Rulings Officer", who is also me, and that appeal will be automatically denied.

Round 1

Question 1

How does MaineDOT award a project when two pre-qualified contractors bid the same amount?

Question 2

How many bridges with international crossings are there in Maine?

Question 3

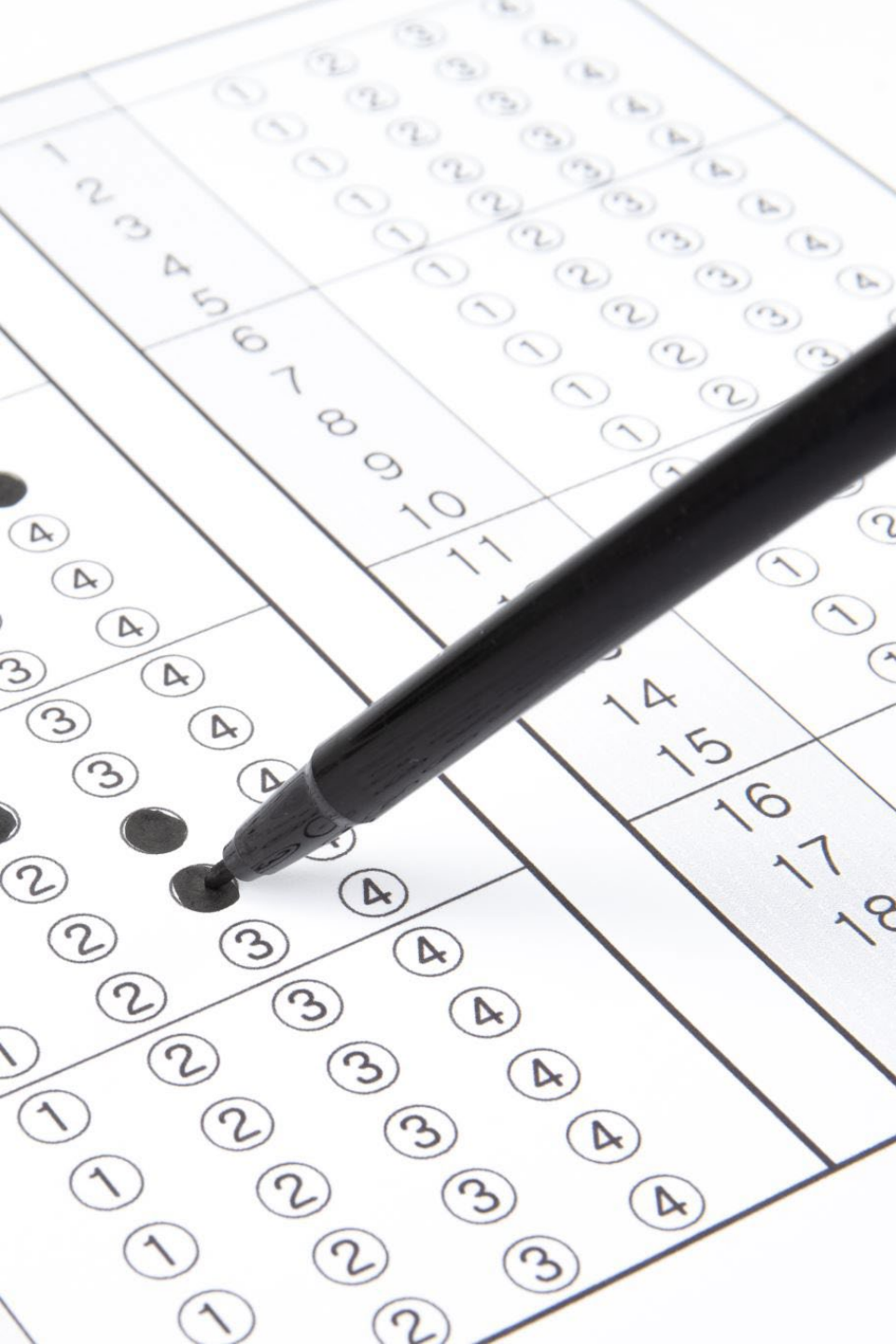
In what year did the Maine State Legislature create the 3 member “Maine State Highway Commission”, which later became MaineDOT?

Question 4

What is MaineDOT's oldest operational bridge? Team receives a bonus point for the correct year it was built.

Question 5

What is the name of the 1973 hit by Gladys Knight & the Pips that asks you to get on a 'Midnight Train to _____'?



End of Round 1

- Assistants, please go around to the tables and mark correct and incorrect answers

Answers to Round 1

Flip a coin

10

1913

Water Street Bridge/Bond Brook
Bridge – Augusta (1854)

Georgia

Round 2

Question 6

What's the mode of transportation in the title of a 1966 hit by John Denver?

Question 7

Who sang Highway to Hell in 1979?

Question 8

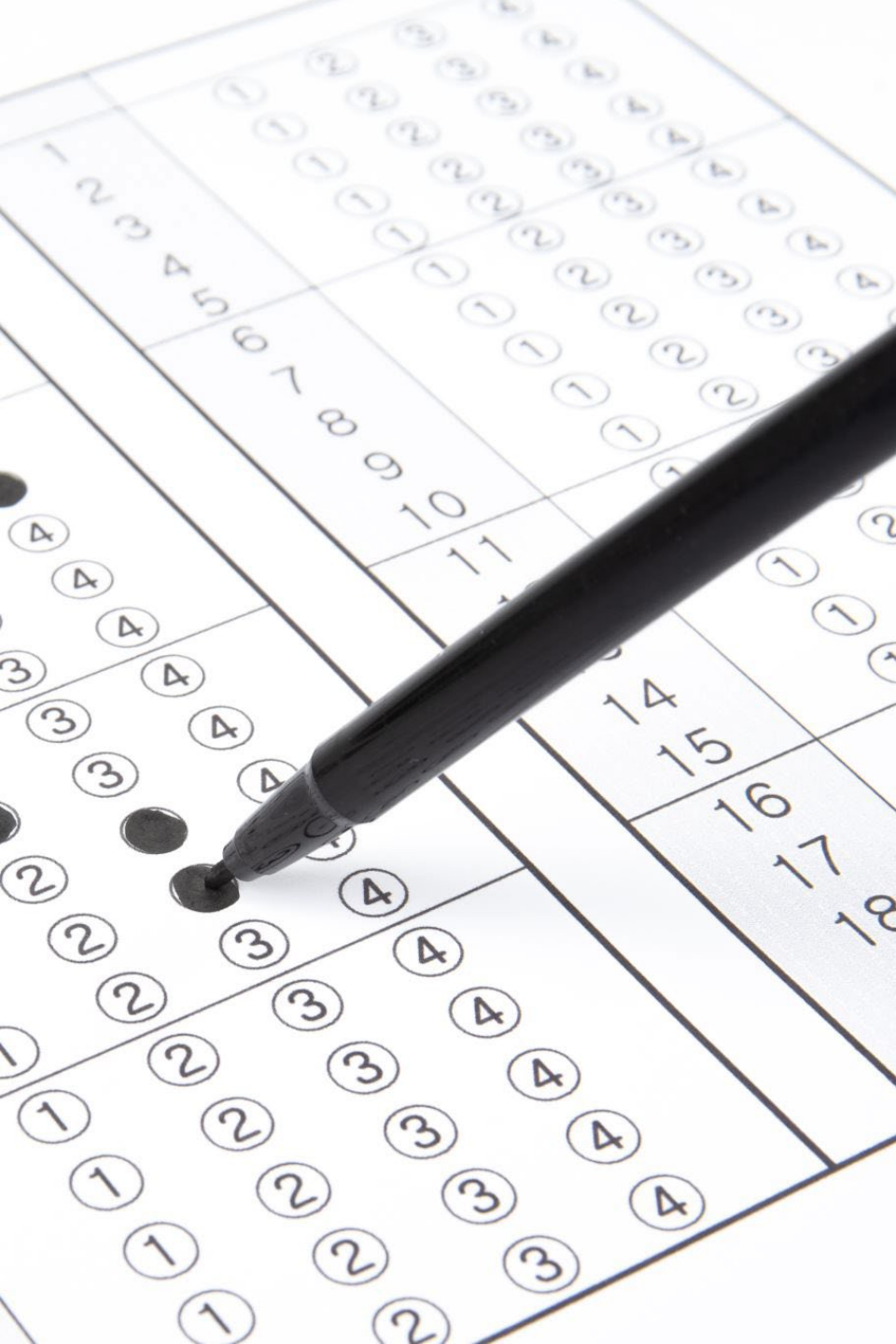
What year was the Maine Turnpike opened?

Question 9

What town had a seasonal Maine Turnpike exit for an attraction, closed in the 1990s?

Question 10

What year did Maine change interstate exit numbers?



End of Round 2

- Assistants, please go around to the tables and mark correct and incorrect answers

Answers to Round 2

Jet Plane

AC/DC

1947

Scarborough (For the Scarborough
Downs)

2004



Round 3

Question 11

What movie starring John Candy & Steve Martin has a transportation title?

Question 12

What global superstar made headlines for private jet use in 2023?

Question 13

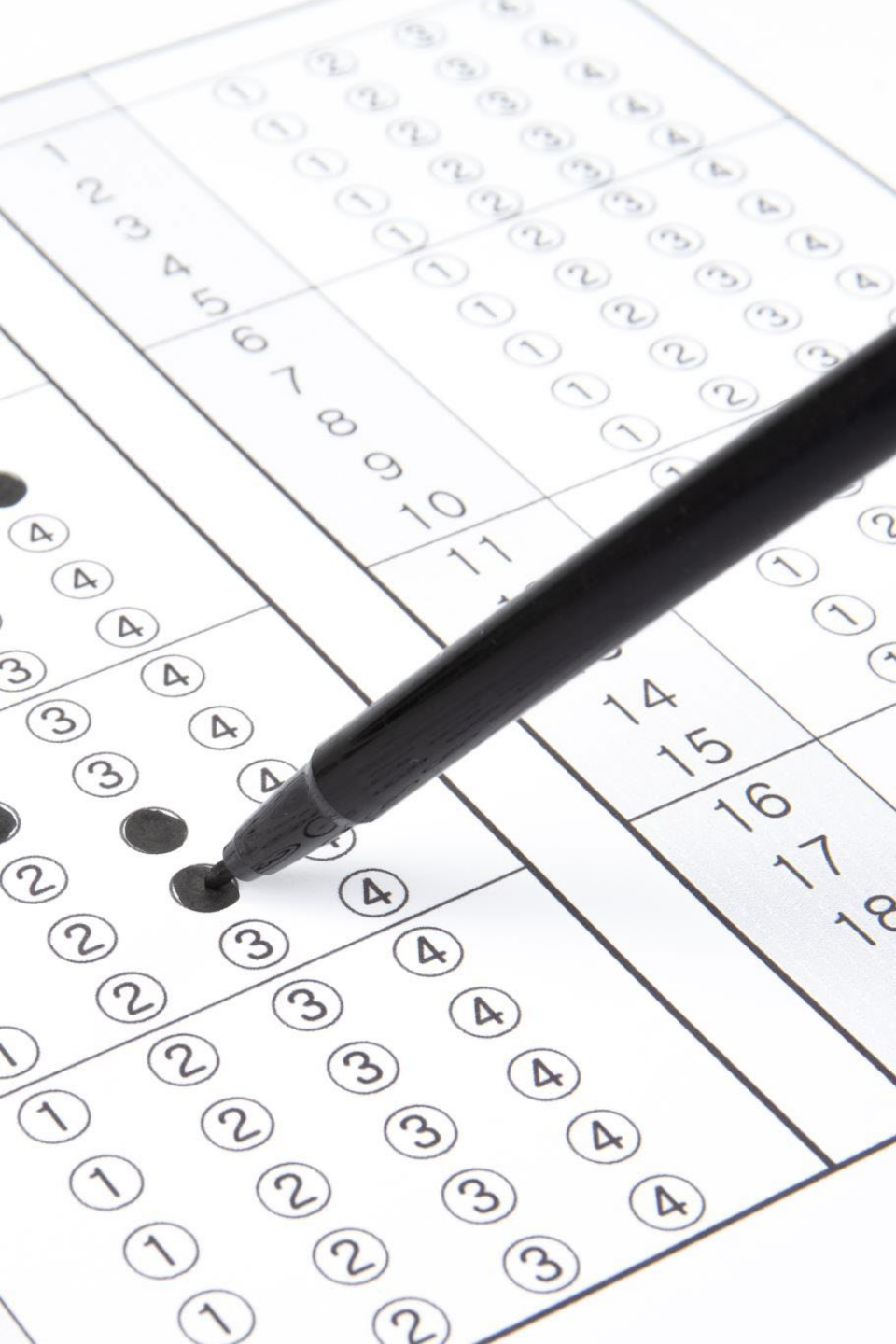
Which European country introduced nationwide free public transportation in 2023?

Question 14

What is the busiest passenger airport in the world?

Question 15

What year was the first U.S. transcontinental railroad completed?



End of Round 3

- Assistants, please go around to the tables and mark correct and incorrect answers

Answers to Round 3

Planes, Trains, and Automobiles

Taylor Swift

Luxembourg

Hartsfield-Jackson Atlanta
International Airport (ATL)

1869

Round 4

Question 16

Which country operates the fastest regular passenger trains?

Question 17

What is the longest interstate highway in the U.S.?

Question 18

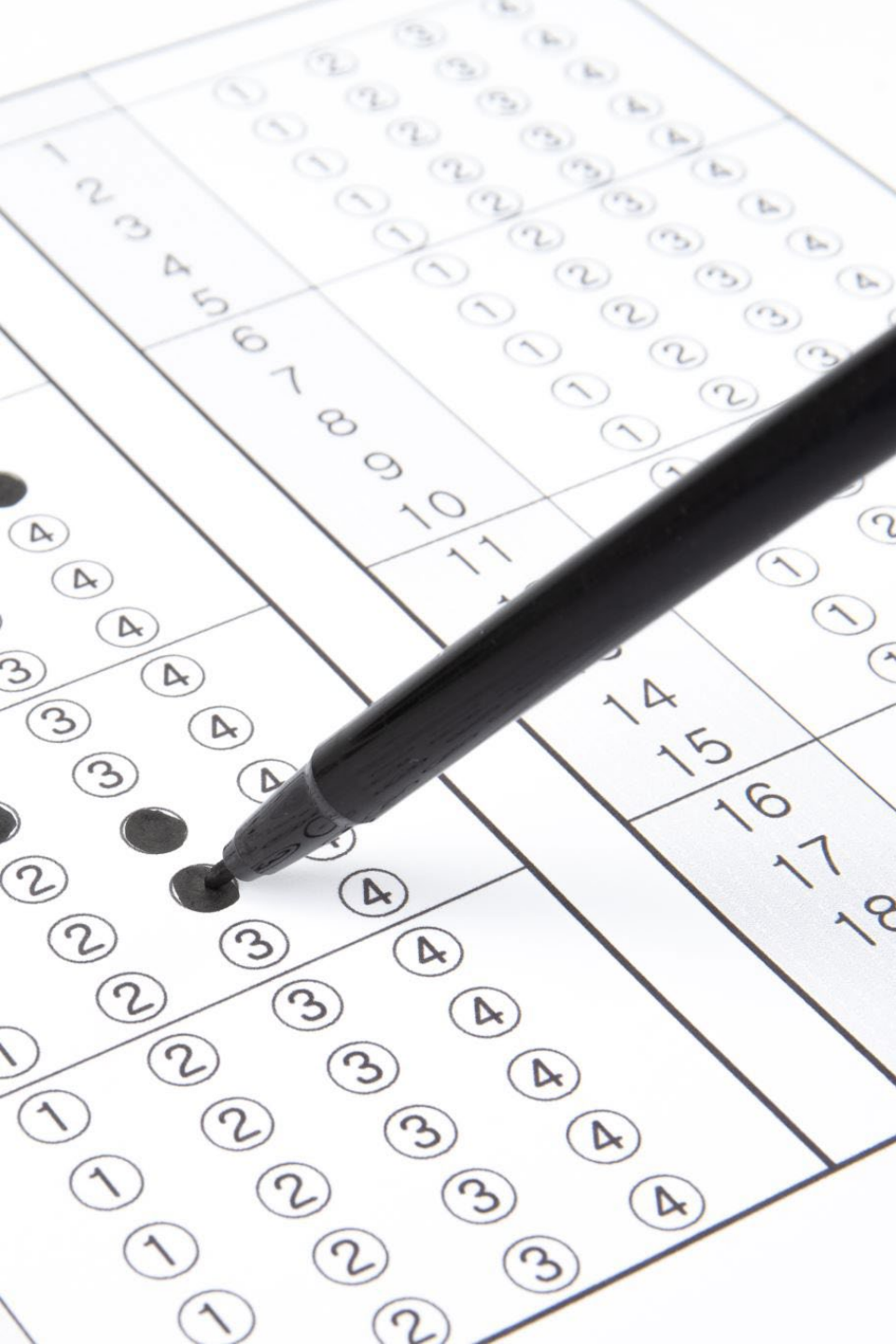
What does “EIS” stand for in transportation projects?

Question 19

What year did the Wright brothers make their first powered flight?

Question 20

What 1980s TV show featured a black Pontiac Trans Am named KITT?



End of Round 4

- Assistants, please go around to the tables and mark correct and incorrect answers

Answers to Round 4

China

Interstate 90 (I-90)

Environmental Impact Statement

1903

Knight Rider



Round 5

Question 21

What major Maine highway is also known as the Airline Road?

Question 22

What six islands are served year-round by the Maine State Ferry Service? 1 point for each correct answer.

Question 23

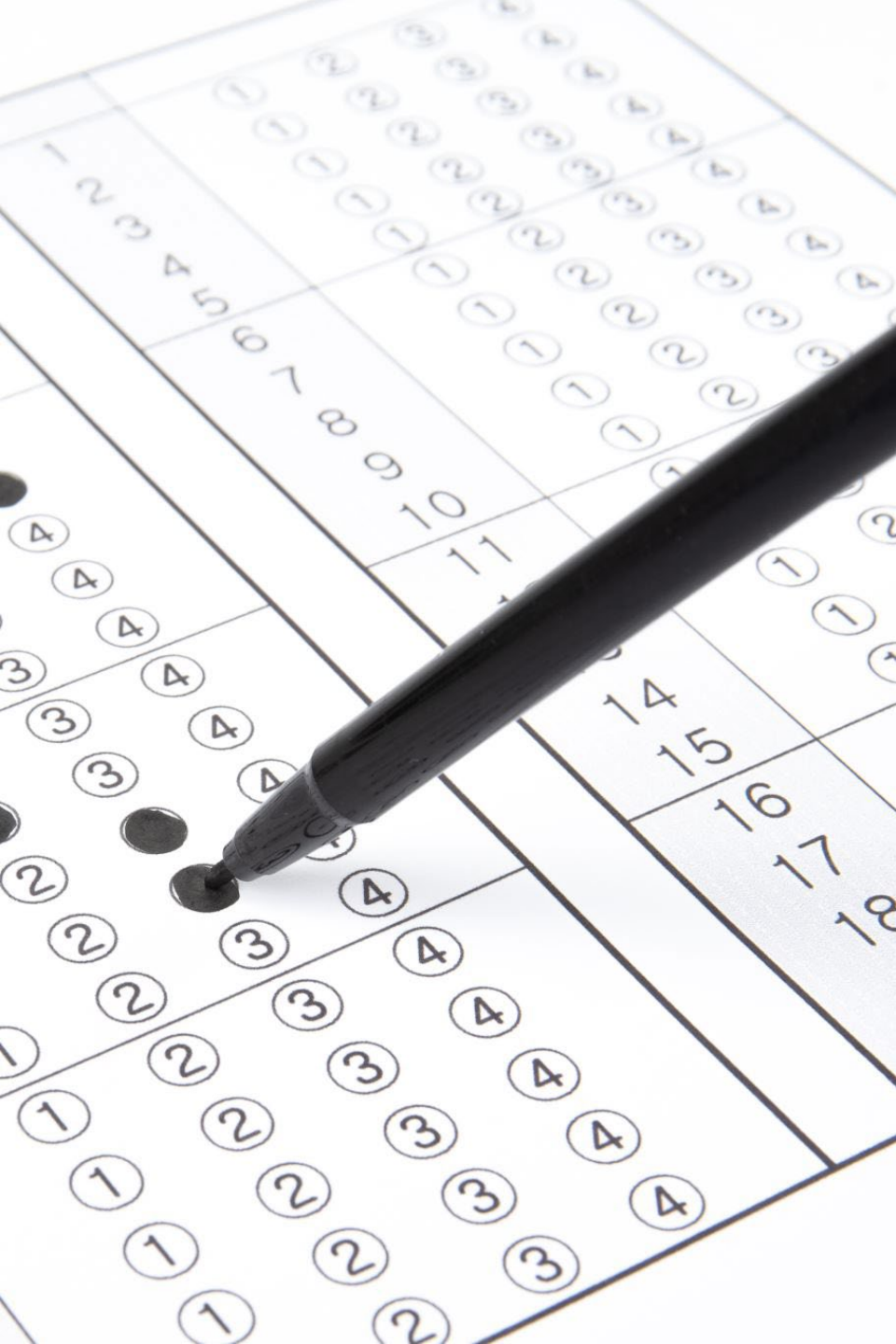
Which Maine highway inspired 'Tombstone Every Mile'?

Question 24

How many UMaine Men's hockey home games have sold out this season?

Question 25

Average speed reduction from Connecticut's Work Zone Speed Pilot?



End of Round 5

- Assistants, please go around to the tables and mark correct and incorrect answers

Answers to Round 5

State Rt. 9

Islesboro, Vinalhaven, North Haven,
Matinicus, Swan's Island, Frenchboro

Route 2, South of Houlton,
"Haynesville Road"

All home games are sold out!

5 MPH



Round 6

Question 26

What does FGA stand for?

Question 27

How many traffic signals exist in Maine?

Question 28

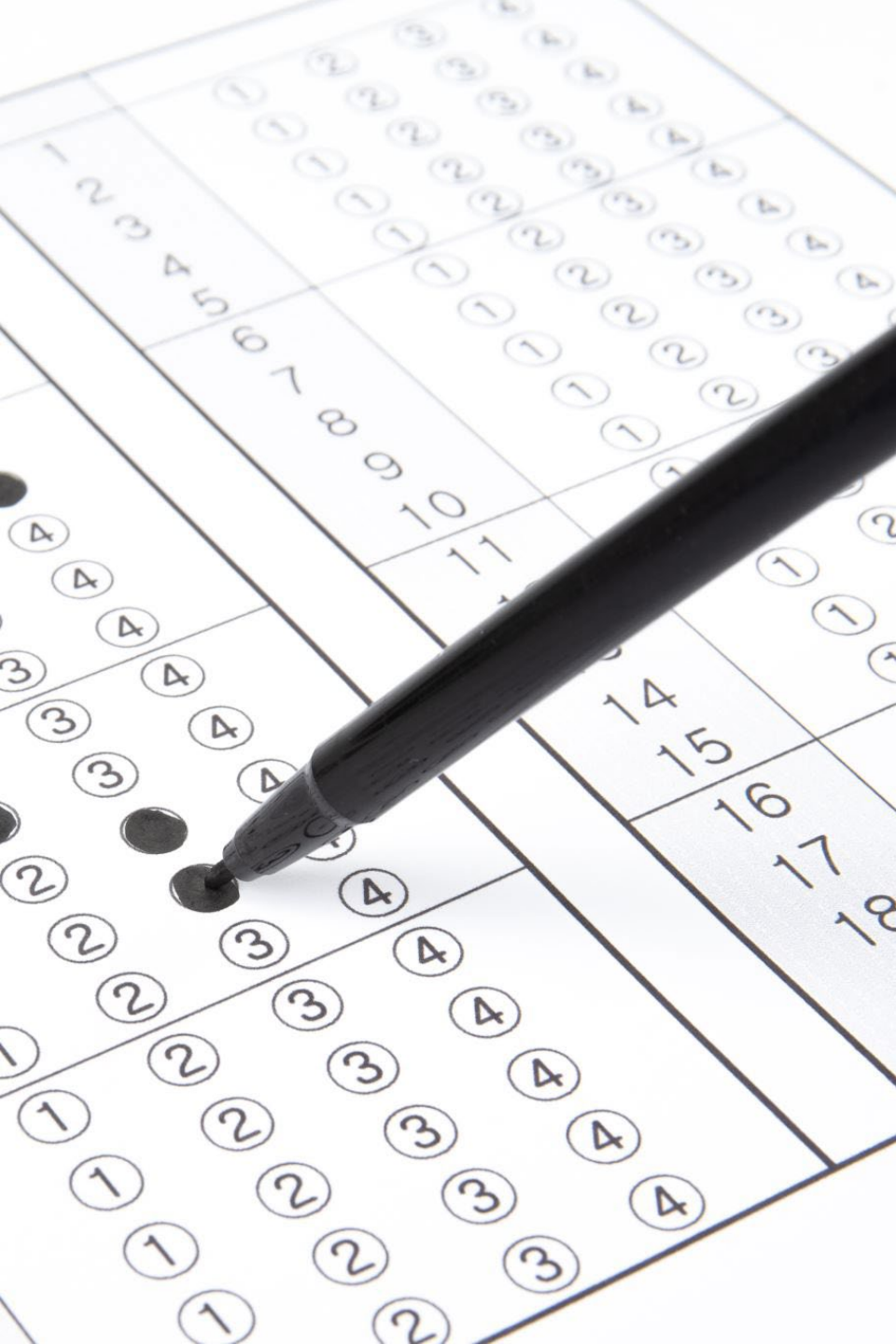
What anniversary did ASCE Maine Section celebrate this year?

Question 29

Fastest recorded speed in an MTA work zone this summer?

Question 30

How many parking spots are in UMaine's Belgrade lot?



End of Round 6

- Assistants, please go around to the tables and mark correct and incorrect answers

Answers to
Round 6

Foamed Glass Aggregate

840 Traffic Signals

75th

131 MPH

551 Parking Spots

FINAL SCORES

