



Rumford Red Bridge

By: Graden Janes



CPM Constructors

- General Contractor based out of Freeport, Maine.
- Focused on Bridge Construction and Rehabilitation.
- Involved in projects all though Northern New England.

- 8.5 million dollar contract
- Complete Bridge Demolition and Construction





- Designed and Constructed a reusable temporary bridge.
- Traffic had to be directed onto temporary bridge.

- Existing bridge completely deconstructed.
- Form and pour abutments.





- Rebar is essential for abutment construction.





- Abutments are used to support the beams and assist in bearing the weight of the bridge.



- Existing Pier had to be chipped out after bridge construction.



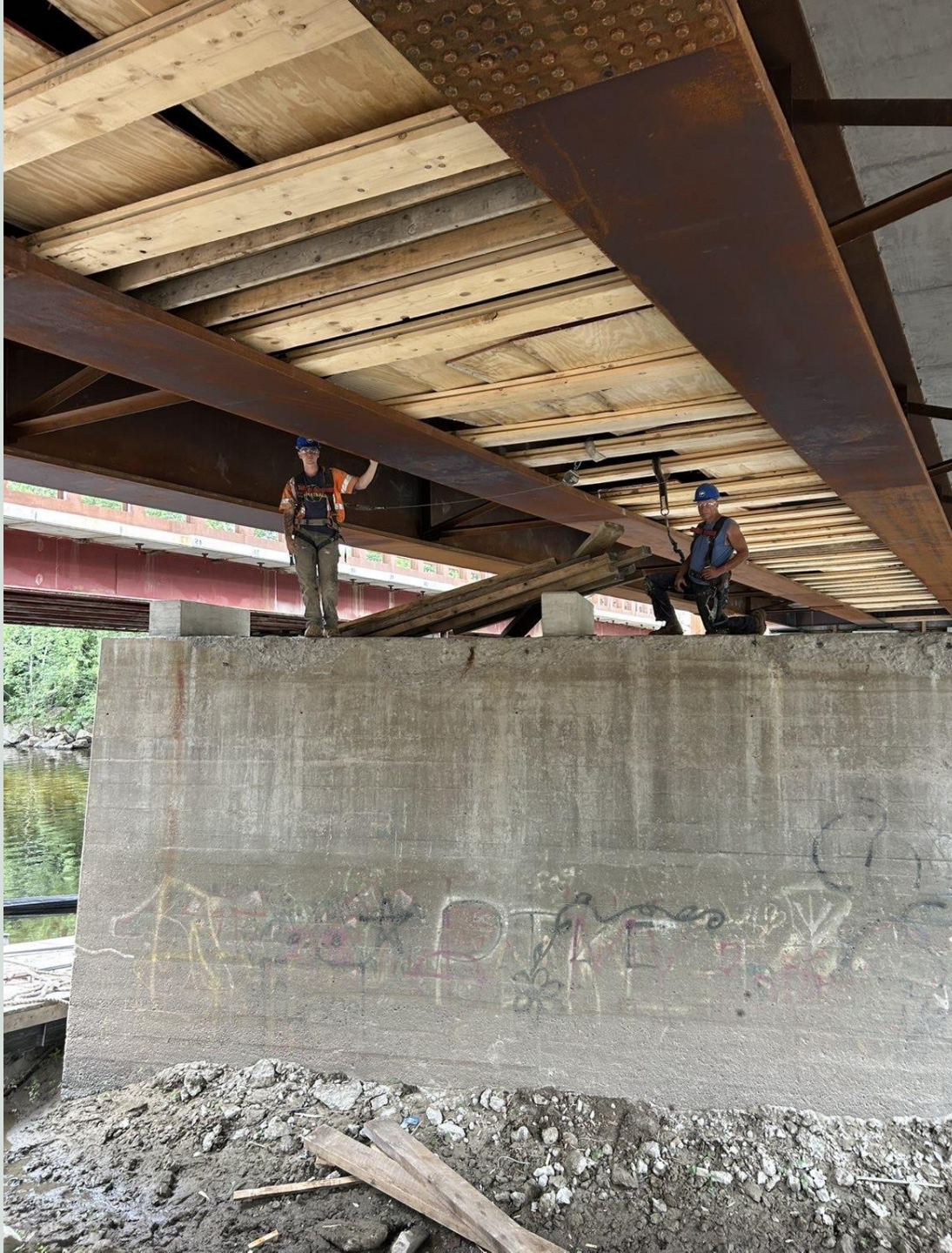


- Cross braces are all installed.
- Crew begins forming deck in preparation for placement.



- Sixteen trucks or 160 yards of concrete needed to install the deck.
- Thirty employees participated in the placement.





- Bays had to be stripped post placement.



- Paving crews came and paved the bridge deck.
- Roadway connections had to be built.
- We began removing the precast concrete deck panels.





- Crossbraces, washers, nuts, and bolts were removed and collected for reuse.
- Workers were kept safe by tying off to adjustable beam clamps.
- Beam had to be rigged up to crane before final cross brace could be removed.





- Barge used to access beams.



- We were able to fit two beams per truck.

1/12/2026





Unexpected struggle

- In December 2023, the town of Rumford faced serious flooding due to a recent storm .

Q&A