



Automated Work Zone Speed Enforcement

December 5, 2025



Maine 2020 - 2024

2,979 work zone related crashes
injuring **944** people.

16 people lost their lives
in work zone crashes

One of the leading causes
of work zone crashes is
speeding.



LD 1457 Timeline





Progress since carry-over

- Speed data collection during July 2025
- Discussions with ACLU
- Discussions with Judicial branch
- Discussions with BMV
- Discussions with State Police
- Pilot program cost development



LD 1457 Key Features

- 3-year pilot program
- Pilot is funded by the Maine Turnpike Authority
- Maine Turnpike Authority does not receive any money from violations.
- Three cameras locations allowed at a time.
- When a vehicle exceeds the posted speed limit by 11 mph or more a citation is created.
- Captures photo of license plate.
- Notice of violation to the registered owner of the vehicle.
- Personal and vehicle information are confidential and not public records.
- Must return report back to Legislature at end of program.

PROGRAM GOALS

- Reduce Speeds in Work Zones
- Improve Driver Behavior
- Promote Work Zone Safety
- Save Worker and Traveler Lives
- Complement Existing State Police Enforcement



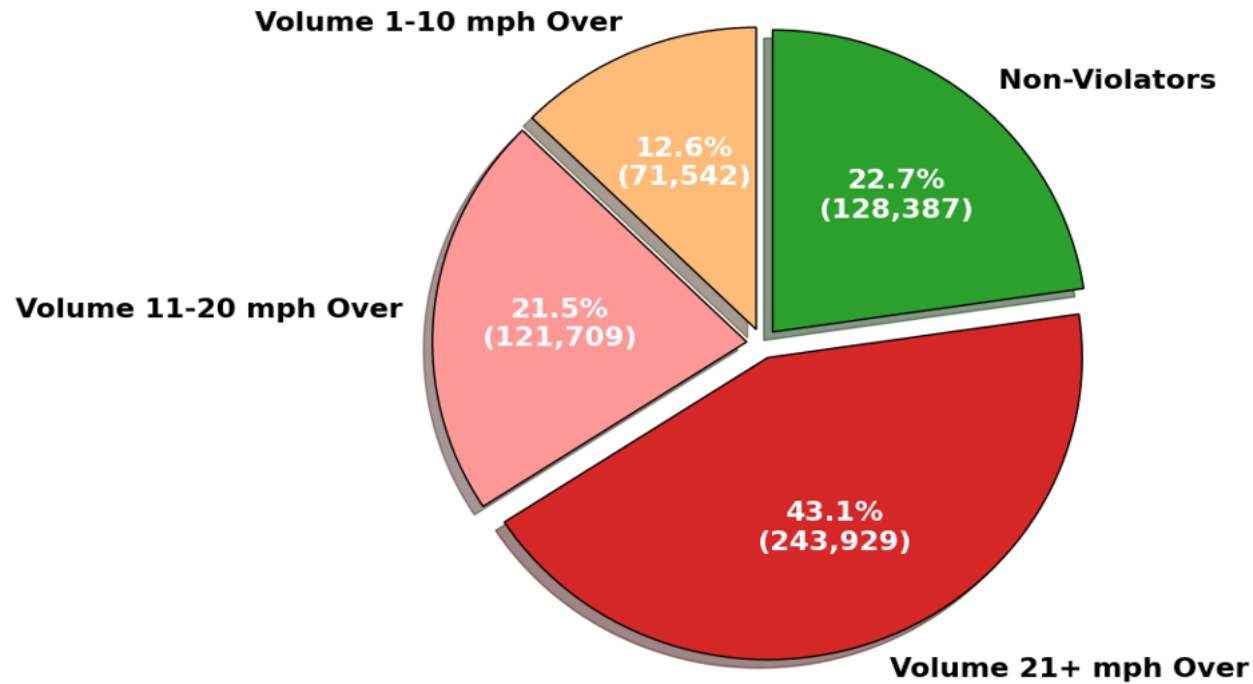
Common arguments against AWZSE

- Revenue generating program
- Speed limits artificially reduced to encourage speeding
- Insufficient warning of entering a AWZSE work zone
- Accuracy of speed measuring devices
- Violators have no opportunity to appeal
- Violation of privacy; 'Big Brother'



MTA data results

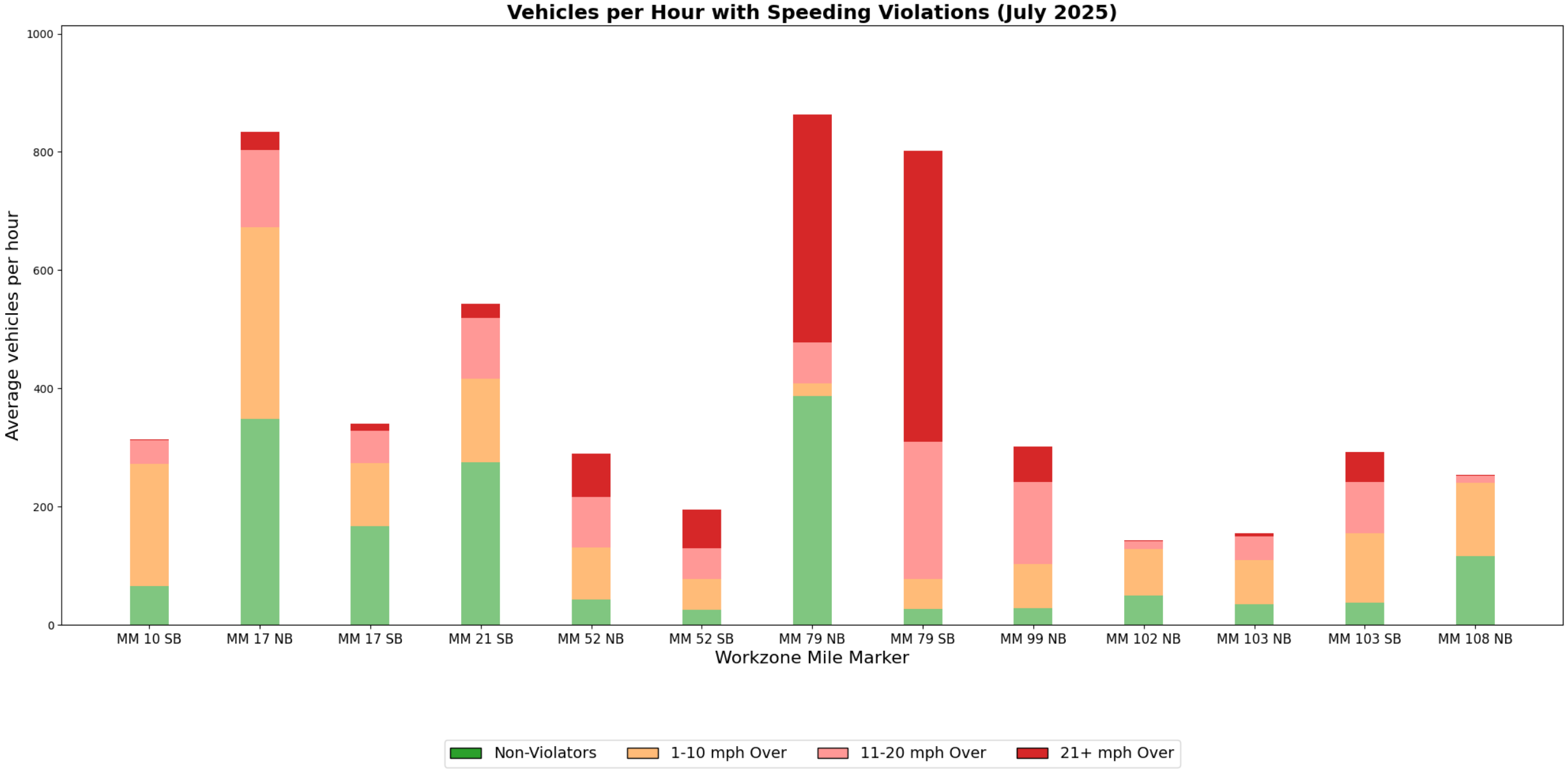
July 2025 data from 13 work zones
when workers are present



Total Violators: 437,179 (77.3%)

Does not include data
from all work zones on
the Turnpike during the
month of July 2025.

July 2025 speed data by representative work zones when workers are present

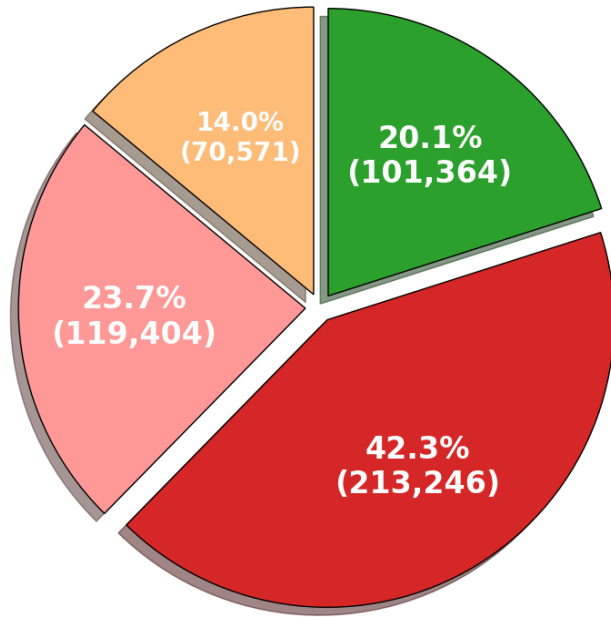


July 2025 speed data by work zone when workers are present

Work Zone Speed Data Summary (July 2025)

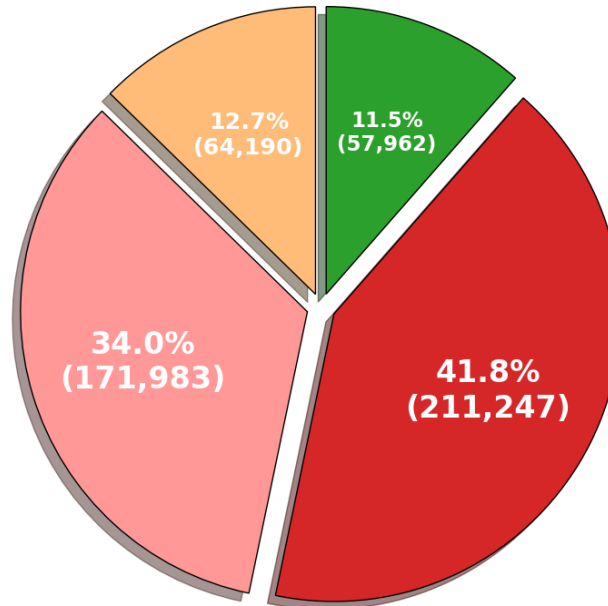
Location	Duration (hrs)	Posted Speed (mph)	Avg Speed (mph)	Max Speed (mph)
MM 10 SB	7.7	60	66	84
MM 17 NB	6.8	60	63	100+
MM 17 SB	12.8	60	60	100+
MM 21 SB	108.1	60	60	100+
MM 46 NB	127.6	50	70	100+
MM 52 NB	81.4	50	63	100+
MM 52 SB	99.6	50	64	100+
MM 79 NB	133.4	60	71	100+
MM 79 SB	236.9	60	82	100+
MM 99 NB	8.7	60	75	100+
MM 102 NB	15.7	60	67	92
MM 103 NB	8.8	60	72	95
MM 103 SB	61.9	60	73	100+
MM 108 NB	17.2	60	64	85

July 2025



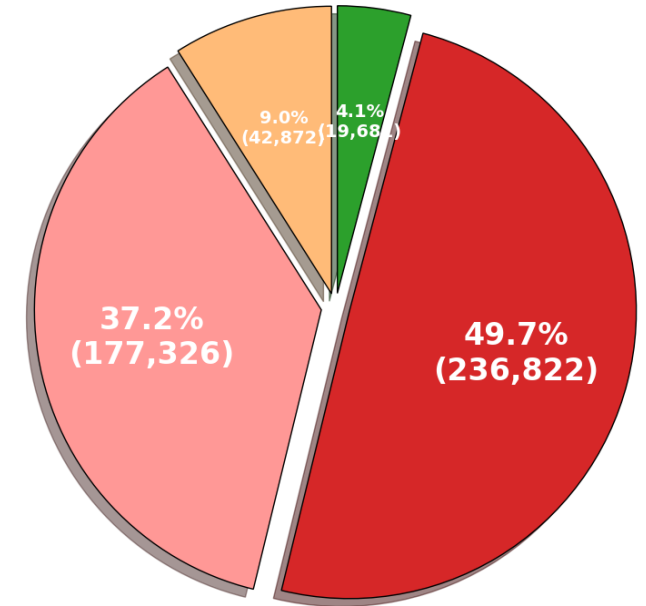
Total Violators: 403,222 (79.9%)

August 2025

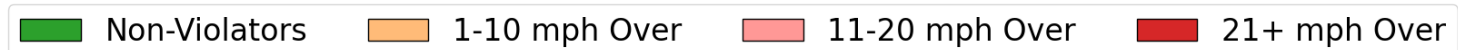


Total Violators: 447,419 (88.5%)

September 2025



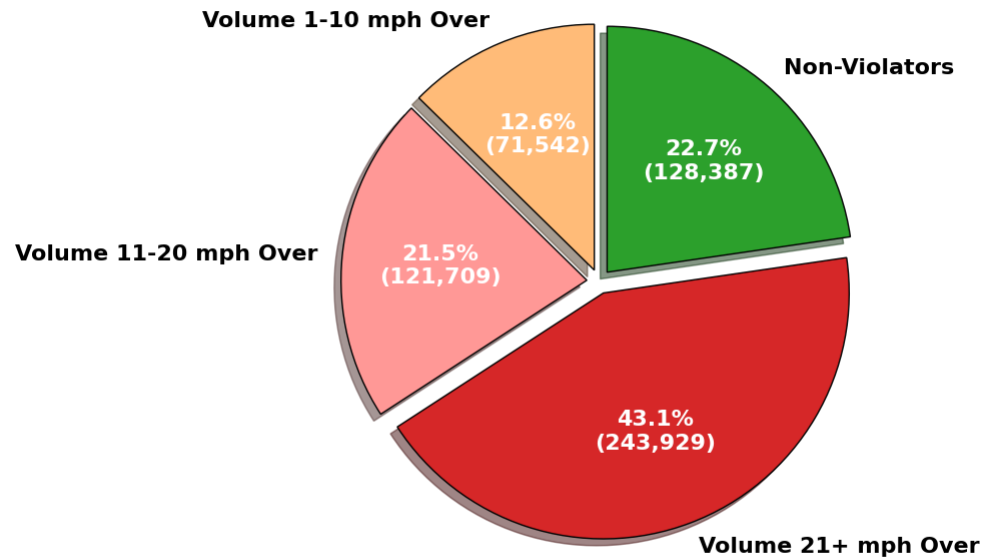
Total Violators: 457,020 (95.9%)





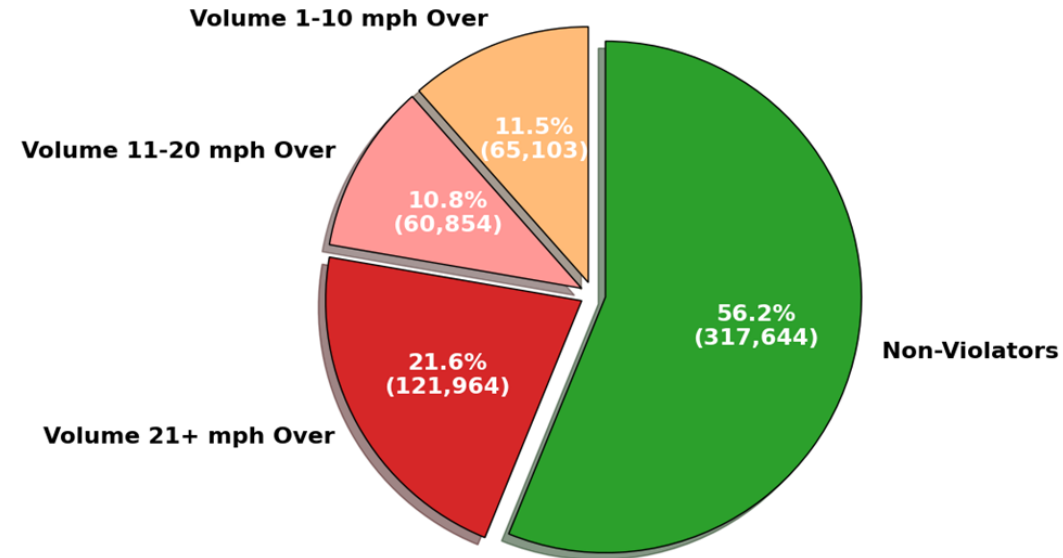
Program Expectations

Before Speeding Enforcement



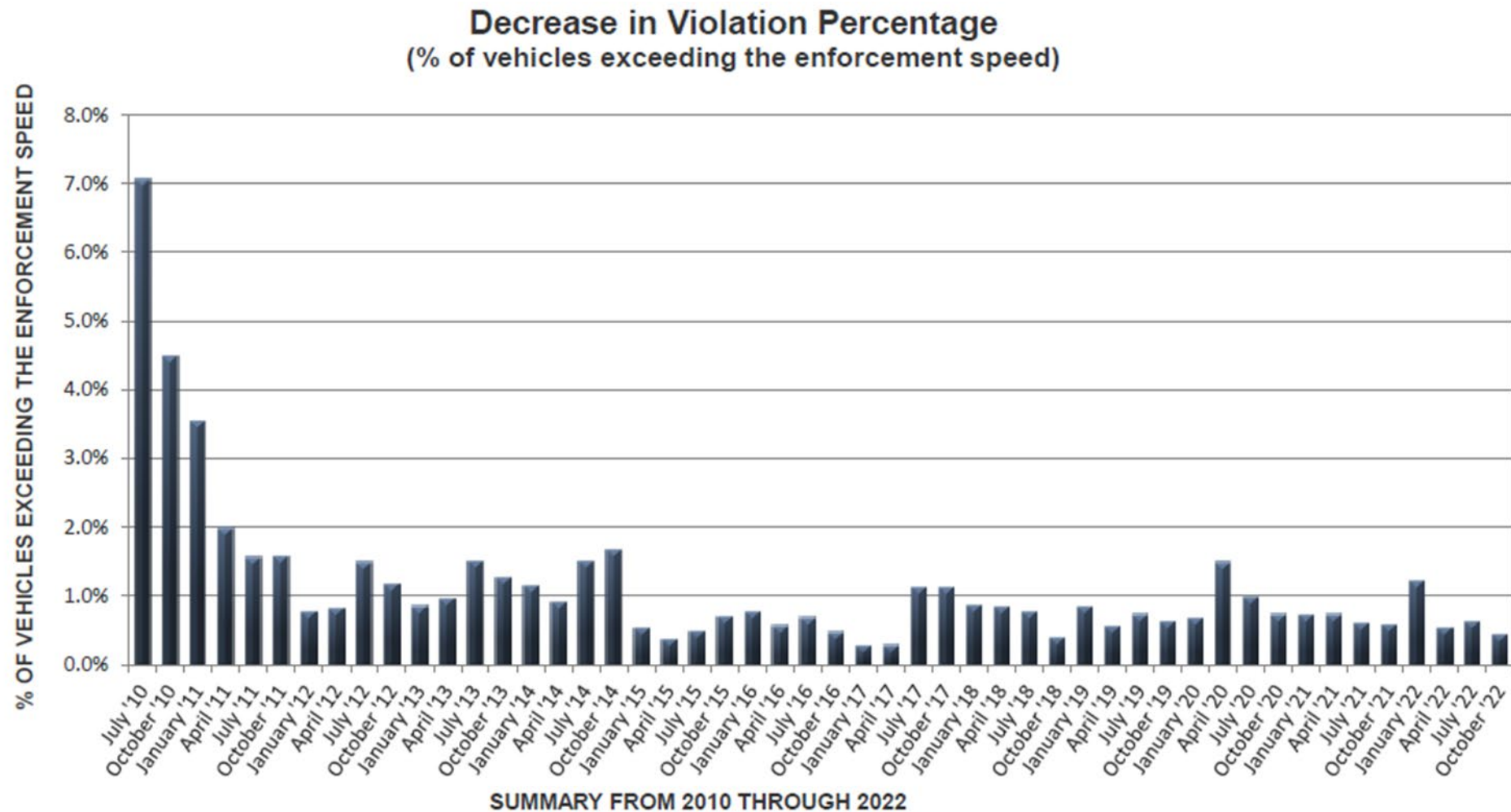
Total Violators: 437,179 (77.3%)

After Speeding Enforcement



Total Violators: 247,922 (43.8%)

Maryland DOT Automated Speed Enforcement Program





AWZSE Deployment Layout

MAINE TURNPIKE INTRODUCES WORK ZONE SPEED CAMERAS

